

## 4575 and 4850 Covered Hopper Railcars

Greenbrier's covered hopper built to transport carbon black is available in two sizes: 4,575 and 4,850 cubic foot capacity. Both have a 286,000-pound gross rail load and feature butterfly outlets with sanitary shields and gates on 12' centers.

DIMENSIONS (APPROX.)	4575	4850
Length, inside	46'-10 1/8"	50'-10 1/8"
Length, over couplers	51'-7 1/2"	55'-7 1/2"
Height, inside	15'-1"	13'-6 3/4"
Height, extreme	15'-5 3/4"	15'- 5 3/4"
Clearance	AAR Plate C	AAR Plate C
Outlets	(3) 5001C gravity butterfly with sanitary shield	(3) 5001D gravity butterfly with sanitary shield
Width, extreme	10'-7 5/8"	10'- 7 5/8"
Hoppers	3	3
Hatch Covers	(16)16" dia.	(22) 16" dia.

WEIGHT/CAPACITY (EST.)	4575	4850
Light weight	58,200 lbs.	62,700 lbs.
Load limit	227,800 lbs.	223,300 lbs.
Gross rail load	286,000 lbs.	286,000 lbs.
Capacity	4,575 cu. ft.	4,850 cu. ft.

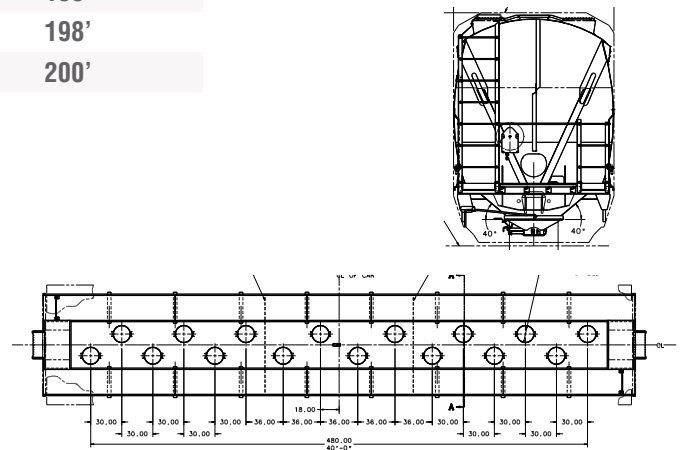
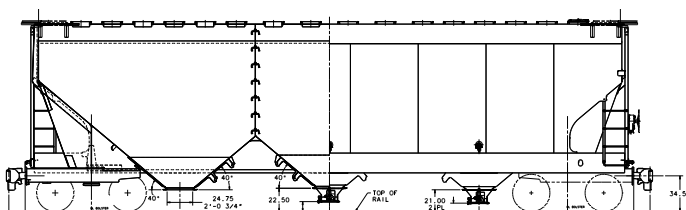
CURVE NEGOTIABILITY RADIUS	4575	4850
Uncoupled	150'	150'
Coupled to base car	180'	198'
Coupled to like car	182'	200'



**THE GREENBRIER COMPANIES**

One Centerpoint Drive, Suite 200  
Lake Oswego, Oregon 97035

info@gbrx.com



*These general dimensions are representative and subject to change without notice.*