

7100 Cube Woodchip Gondola

Greenbrier has designed a high capacity gondola which includes double end doors, for the shipment of wood chips, cottonseed and other low density products. Our newest 7,100 cubic foot gondola design features emphasize safety for both shippers and customers with backup suspension when the door opens, releasing the product. Also included are tarp tie down rods along the perimeter for ease of attaching a cover, and the ability to select a rotating coupler configuration.



THE GREENBRIER COMPANIES

One Centerpoint Drive, Suite 200
Lake Oswego, Oregon 97035

info@gbrx.com

DIMENSIONS (APPROX.)

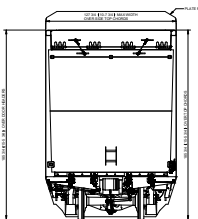
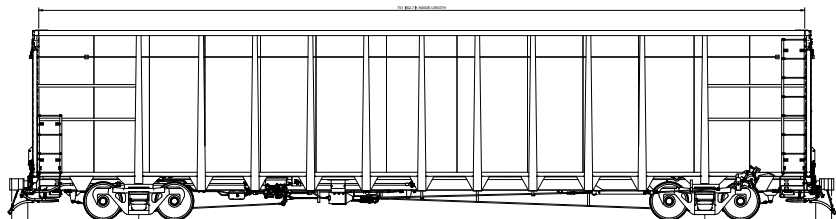
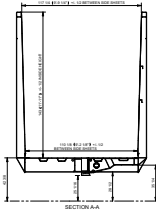
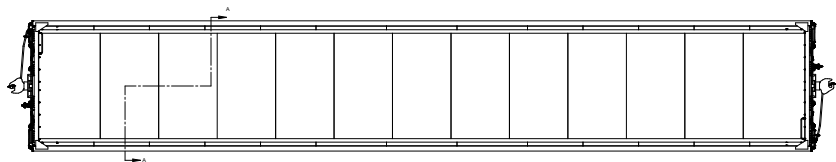
Length, inside	62'-7"
Length, over couplers	67'
Height, inside	11'-11"
Height, extreme	15'- 5 3/4"
Clearance	AAR Plate F
Width, inside	9'-9 1/4"
Width, extreme	10'-8"
Door opening, width	9'-9 3/4"
Height, top of rail to top chord	15'-5 3/8"

WEIGHT/CAPACITY (EST.)

Light weight	73,500 lbs.
Load limit	212,500 lbs.
Gross rail load	286,000 lbs.
Capacity	7,100 cu. ft.

CURVE NEGOTIABILITY RADIUS

Uncoupled	150'
Coupled to base car	275'
Coupled to like car	275'



These general dimensions are representative and subject to change without notice.