

## 20,800 Gallon Tank Car

This 20,800 gallon rubber-lined tank car is specifically designed for the handling of hydrochloric acid. Its improved "spider" arrangement offers greater lining protection by reducing the risk of lining damage. This creates a higher level of safety for personnel and facilities.

### DIMENSIONS (APPROX.)

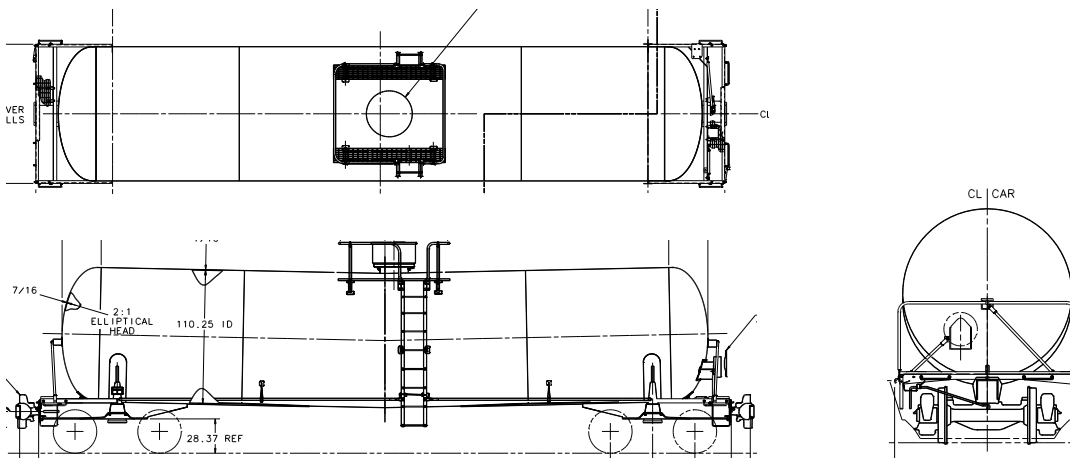
Length over truck centers	<b>36'-11 3/8"</b>
Height, extreme	<b>14'-7"</b>
Width, extreme	<b>10'-2"</b>
Tank, inside diameter	<b>9'-2 1/4"</b>
Tank, outside length	<b>44'-6 3/4"</b>
Length over pulling faces	<b>50'-5 1/8"</b>
Clearance	<b>AAR Plate B</b>

### WEIGHT/CAPACITY (EST.)

Light weight	<b>60,800 lbs.</b>
Load limit	<b>202,200 lbs.</b>
Gross rail load	<b>263,000 lbs.</b>
Capacity	<b>20,384 gal.</b>

### CURVE NEGOTIABILITY RADIUS

Uncoupled	<b>150'</b>
Coupled to base car	<b>177'</b>
Coupled to like car	<b>178'</b>



*These general dimensions are representative and subject to change without notice.*

### THE GREENBRIER COMPANIES

One Centerpoint Drive, Suite 200  
Lake Oswego, Oregon 97035

info@gbx.com