

## 22,480 Gallon Tank Car

This 22,480 gallon tank car is rubber-lined and specifically designed to transport hydrochloric acid. It has a "spider" arrangement for lining protection. There is an optional 9'-2 1/4" tank diameter depending on customer loading and unloading infrastructure requirements.



### THE GREENBRIER COMPANIES

One Centerpoint Drive, Suite 200  
Lake Oswego, Oregon 97035

info@gbx.com

#### DIMENSIONS (APPROX.)

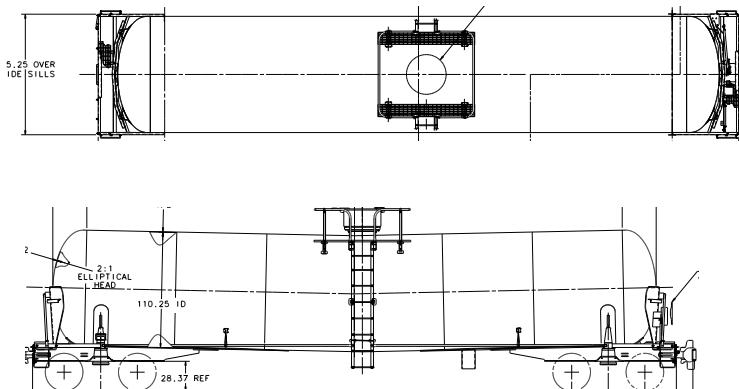
Length over truck centers	40'-5 1/4"
Height, extreme	14'-11"
Width, extreme	10'-2 11/16"
Tank, inside diameter	9'-2 1/4"
Tank, outside length	48'-3/4"
Length over pulling faces	53'-11"
Clearance	AAR Plate B

#### WEIGHT/CAPACITY (EST.)

Light weight	68,800 lbs.
Load limit	217,200 lbs.
Gross rail load	286,000 lbs.
Capacity	22,030 gal.

#### CURVE NEGOTIABILITY RADIUS

Uncoupled	150'
Coupled to base car	192'
Coupled to like car	193'



*These general dimensions are representative and subject to change without notice.*