

Aftermarket Parts

COIL COVERS



Rigid, removable steel hoods that protect high-value coils during rail transit—preserving surface finish, shape integrity and cleanliness from origin to destination.

Premium steel coils demand premium protection. Greenbrier's coil covers eliminate the need for dedicated covered gondolas while reducing damage claims, corrosion risk and rework—so your freight arrives ready to use. **Built for durability** and **seamless loading operations**, they help **lower lifecycle costs** while **improving operational efficiency**.



COIL COVERS **DELIVER** **ASSURANCE** IN EVERY SHIPMENT.



KEY FEATURES

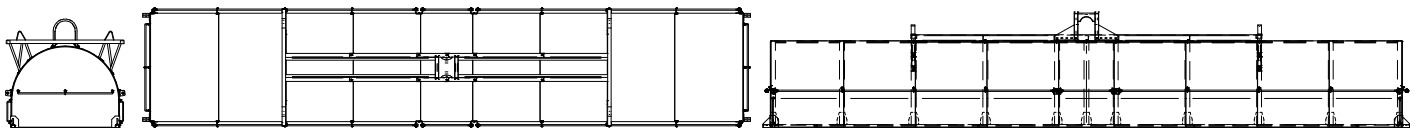
- Steel construction built for demanding rail environments and long service life
- Compatible with multiple trough configurations for broad fleet applicability
- Yard-ready design supports efficient crane lifting and cover stacking

PROTECTION OPTIONS

- Moisture sealing system
- Interior lining for surface protection
- Insulation packages available
- Customer-specific compliance requirements

SPECIFICATIONS

Estimated Weight	5662 lbs.
Width, Inside	7'-3 3/8"
Length, Inside	42'-6"
Length	43'
Width	7'-10 1/4"



Trusted aftermarket parts that keep you moving!

LEARN MORE!

